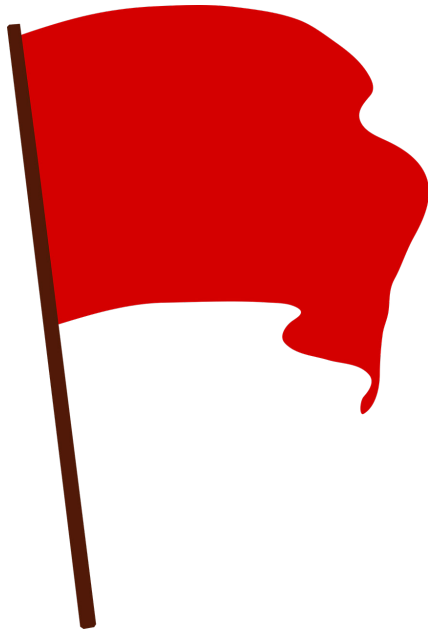


REDUCE RISKS

- If planning a prescribed burn, immediately cancel the planned operations; **DO NOT** burn on a red flag day
- If pulling a trailer, make sure no chains are dragging; sparks from dragging chains can ignite a fire
- Dispose of cigarettes properly; **DO NOT** drop lit cigarettes on the ground or throw them out the window
- NO fireworks
- Be especially aware when using fire arms or target shooting



- Avoid mowing the lawn on red flag days:
 - If you must mow the lawn, mow before 10 a.m. when grass is moist
 - Watch the area for at least an hour after mowing to make sure a fire does not start
- Avoid leaving equipment on areas with dry vegetation
- Avoid parking vehicles on dry vegetation, it is best to park on bare soil or paved surfaces
- Make sure chainsaws and other equipment have spark arresters
- Pay attention to trail or park closures:
 - If the area is closed, it is closed for a reason, please respect the closure
- Pay attention to other restrictions such as **no open fires**
- Avoid using charcoal or gas grills on red flag days



CONTACT US

Nebraska Forest Service T: (402) 472-2944
PO Box 830815 E: trees@unl.edu
Lincoln, NE 68588 W: nfs.unl.edu

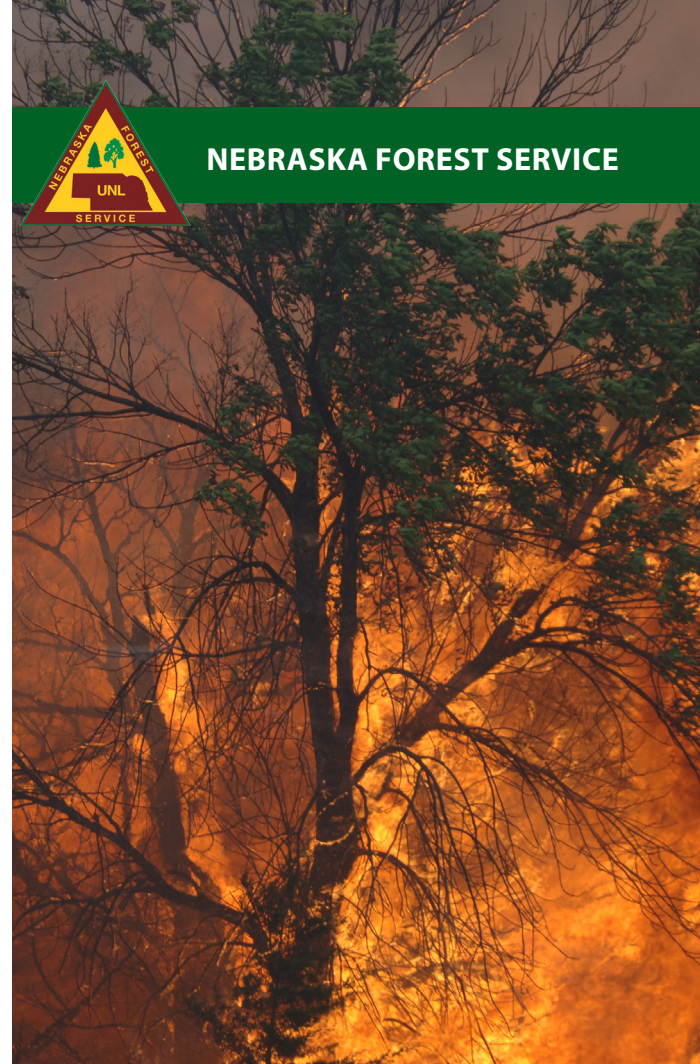
Updated by: John Erixson and Diana Marcum

For more information please visit nfs.unl.edu

The University of Nebraska does not discriminate based on race, color, ethnicity, national origin, sex, pregnancy, sexual orientation, gender identity, religion, disability, age, genetic information, veteran status, marital status, and/or political affiliation in its programs, activities, or employment.



NEBRASKA FOREST SERVICE



Red Flag Warning: Critical fire weather conditions

More information: www.nfs.unl.edu

Photo credits: NFS

WF 04-2017-09

RED FLAG WARNING

A red flag warning is issued by the National Weather Service when the expected weather conditions can lead to ideal wildland fire conditions. These exist when conditions are right for combustion or ignition of a wildfire and the rapid spread of the fire can be expected.



A warning is issued when conditions are expected within the next 24 hours.

A red flag warning is an advisory to be careful, little things can go terribly bad, quickly when it relates to fires.

All residents and visitors need to be extremely cautious during periods of high fire danger. One spark can lead to a large, damaging wildfire.

FIRE WEATHER WATCH

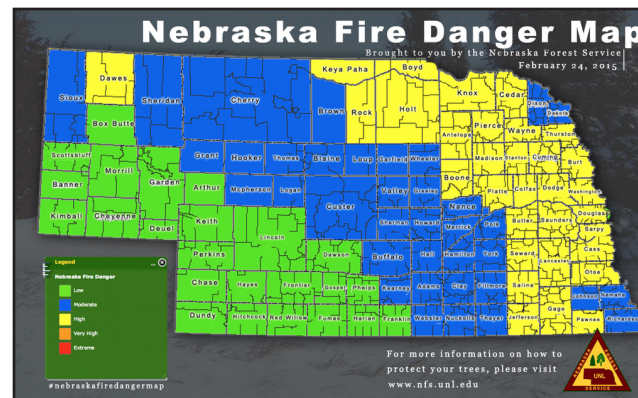
A fire weather watch looks out past the next 24 hour period. This forecast typically looks out 24 - 72 hours for weather conditions favorable for fire combustion and the rapid fire spread.

Watches and warnings are issued to assist firefighters and to alert the general public about the conditions, and the possible result in ignition and rapid expansion of a wildfire.

In the Fall and Spring, when forest fuels and grasses are cured, dry conditions exist. When the fire danger rating is high combined with wind, low humidity and warm temperatures, a warning or watch may be posted.

FIRE DANGER MAP

The Nebraska Forest Service along with the National Weather Service maintain an interactive map of the fire danger. The map can be viewed at nfs.unl.edu



FIRE WEATHER

Lack of rain, high rain and warm temperatures can lead to the issuance of a red flag warning. Several components are considered in a Fire Weather Forecast, these include:

- Humidity:
 - Less than 20% humidity increases the probability of ignition; lower the humidity, the greater the chance fire fuels will ignite

Wind:

- Sustained winds over 15mph will cause fires to rapidly expand; small sparks become large quickly

- Temperature:

- 75° F and above

When these conditions exist, ignition is easier and the fires are ore difficult to control. A dramatic increase in wildfire activity can be expected.

